



# ATP1AL1 Polyclonal Antibody

<b>Catalog No</b>	YP-Ab-00761
<b>Isotype</b>	IgG
<b>Reactivity</b>	Human;Rat
<b>Applications</b>	WB;ELISA
<b>Gene Name</b>	ATP12A
<b>Protein Name</b>	Potassium-transporting ATPase alpha chain 2
<b>Immunogen</b>	Synthesized peptide derived from ATP1AL1 . at AA range: 380-460
<b>Specificity</b>	ATP1AL1 Polyclonal Antibody detects endogenous levels of ATP1AL1 protein.
<b>Formulation</b>	Liquid in PBS containing 50% glycerol, 0.5% BSA and 0.02% sodium azide.
<b>Source</b>	Polyclonal, Rabbit,IgG
<b>Purification</b>	The antibody was affinity-purified from rabbit antiserum by affinity-chromatography using epitope-specific immunogen.
<b>Dilution</b>	Western Blot: 1/500 - 1/2000. ELISA: 1/20000. Not yet tested in other applications.
<b>Concentration</b>	1 mg/ml
<b>Purity</b>	≥90%
<b>Storage Stability</b>	-20°C/1 year
<b>Synonyms</b>	ATP12A; ATP1AL1; Potassium-transporting ATPase alpha chain 2; Non-gastric H(+)/K(+) ATPase subunit alpha; Proton pump
<b>Observed Band</b>	115kD
<b>Cell Pathway</b>	Apical cell membrane ; Multi-pass membrane protein .
<b>Tissue Specificity</b>	Expressed in airway epithelial cells (at protein level) (PubMed:29391451). Found in skin and kidney. Detected in prostate basal cells (at protein level). Expression is increased in benign prostate hyperplasia and tumor tissues (at protein level).
<b>Function</b>	catalytic activity:ATP + H(2)O + H(+)(In) + K(+)(Out) = ADP + phosphate + H(+)(Out) + K(+)(In).,function:Catalyzes the hydrolysis of ATP coupled with the exchange of H(+) and K(+) ions across the plasma membrane. Responsible for potassium absorption in various tissues.,similarity:Belongs to the cation transport ATPase (P-type) family. Type IIC subfamily.,subunit:Composed of two subunits: alpha (catalytic) and beta.,tissue specificity:Found in skin and kidney.,
<b>Background</b>	The protein encoded by this gene belongs to the family of P-type cation transport ATPases. This gene encodes a catalytic subunit of the ouabain-sensitive H <sup>+</sup> /K <sup>+</sup> -ATPase that catalyzes the hydrolysis of ATP coupled with the exchange of H <sup>+</sup> and K <sup>+</sup> ions across the plasma membrane. It is also responsible for potassium absorption in various tissues. Two transcript variants encoding different isoforms have been found for this gene. [provided by RefSeq, Jun 2010],

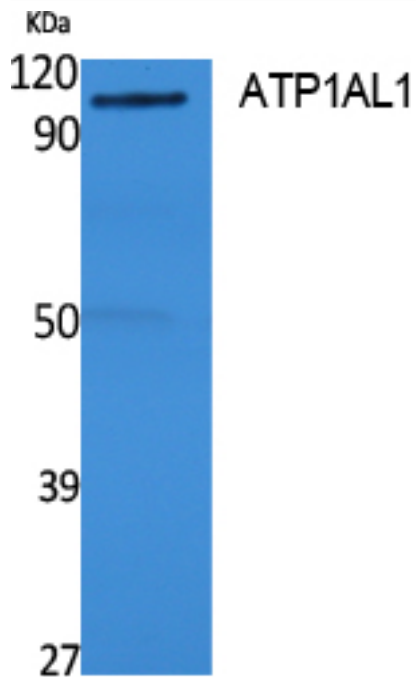
**matters needing attention**

Avoid repeated freezing and thawing!

**Usage suggestions**

This product can be used in immunological reaction related experiments. For more information, please consult technical personnel.

## Products Images



Western Blot analysis of extracts from rat stomach, using ATP1AL1 Polyclonal Antibody. Secondary antibody(catalog#:RS0002) was diluted at 1:20000